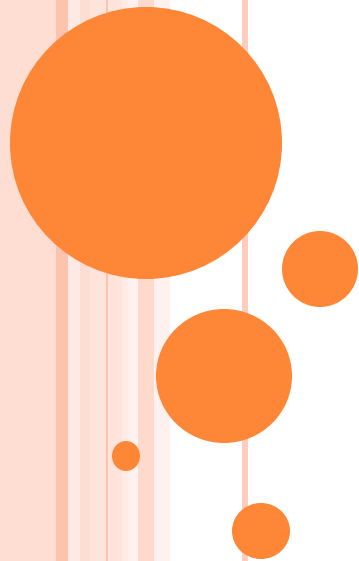




RADHE
INDUSTRIES



- RADHE INDUSTRIES established in 2020. Quality assurance is offered by us on the whole array of products. For manufacturing the entire range, we make use of advanced technology which makes our products reliable and defect-free. We provide Job Work . Our advanced infrastructural unit is constructed At. & Po. Indrad, Ta. Kadi, near by Chhatral and is upgraded from time to time in order to keep the facilities in line with modern technology. It is the assistance of our modern facilities because of which we can meet the requirements of customers in an effective manner and in a nominal time frame. We are also thankful to our employees who work with complete dedication in order to meet our set goals and stand strong in the market.



Nature of Business	Manufacturer
Year of Establishment	2020
No. of Employees	10
GST No.	24ABBFR8285Q1ZE
Ownership Type	Partnership Type
Monthly Production Capacity	As Per Customer Demand
Banker	BANK OF BARODA
No. of Production Units	01
No. of Engineers	02
Warehousing Facility	Yes
No. of Injection Moulding Machines	04



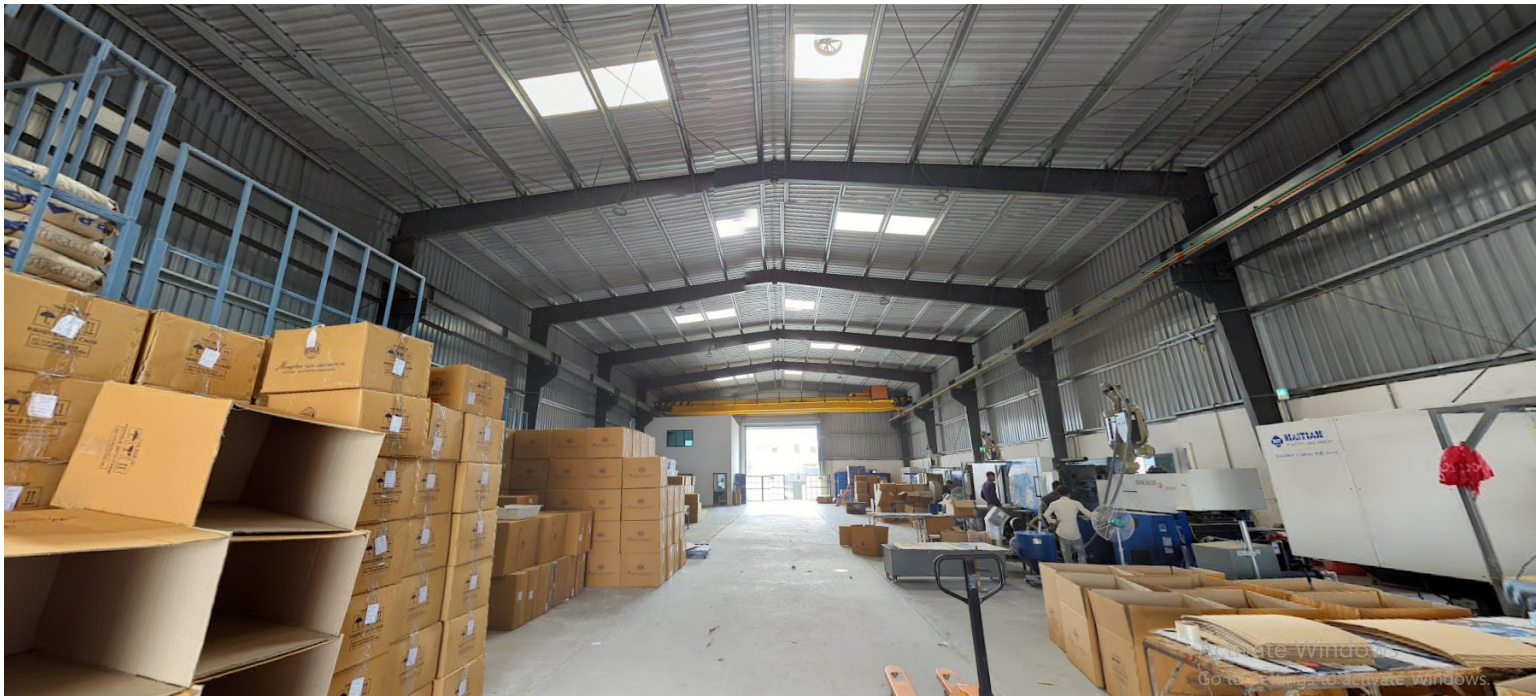
WHY CHOOSE US?

- Developing best quality products and delivering them on time.



INFRASTRUCTURE:

- Having 10000 square feet plant area. And also having 5000 square feet future expansion area.



MODERN MACHINERY:

- We have installed latest and advanced injection moulding machines capacity from 160 Tones to 450 Tones.





SPECIFICATION:

SPECIFICATION:		MACHINE : 1	MACHINE : 2	MACHINE : 3	MACHINE : 4
BRAND NAME		HAITIAN	HAITIAN	HAITIAN	HAITIAN
INJECTION UNIT		MA 1600 / 540G	MA 2500 / 1000G	MA 3600 / 2250G	MA 4500 / 2900G
SCREW DIAMETER	mm	45	55	70	90
SCREW L/D RATION	L/D	20	20	20	17.8
SHORT SIZE (THEORETICAL)	cm ³	320	601	1239	2355
INJECTION WEIGHT (PS)	g	291	547	1127	2143
INJECTION RATE	g/s	140	210	323	604
INJECTION PRESSURE	Mpa	169	169	180	123
PLASTICIZING CAPACITY (PS)	g/s	22.2	28.5	44.9	71.8
SCREW SPEED	rpm	0 ~ 235	0 ~ 195	0 ~ 185	0 ~ 170
CLAMPING UNIT					
CLAMP TONNAGE	KN	1600	2500	3600	4500
TOGGLE STROKE	mm	420	540	660	740
SPACE BETWEEN TIE BARS	mm	455 X 455	570 X 570	710 X 710	780 X 780
MAX. MOLD HEIGHT	mm	500	570	710	780
MIN. MOLD HEIGHT	mm	180	220	250	330
EJECTOR STROKE	mm	140	150	160	200
EJECTOR TONNAGE	KN	33	62	110	110
OTHERS					
MAX. PUMP PRESSURE	Mpa	16	16	16	16
PUMP. MOTOR POWER	Kw	15	22	37	45
HEATER POWER	Kw	11.55	17.75	30.65	37.65
MACHINE DIMENSION (LXWXH)	m	5.17 X 1.33 X 2.05	6.16 X 1.52 X 2.2	7.5 X 1.88 X 2.6	8.1 X 2.05 X 2.7
MACHINE WEIGHT	t	4.9	7.8	14.7	18.8
HOPPER CAPACITY	Kg	25	50	50	50
OIL TANK CAPACITY	L	235	355	640	820



QUALITY POLICY:

- We assure to provide superior quality plastic parts by satisfying customer's exact requirement on time.



OUR MISSION:

- Offering superior service and support to our client.

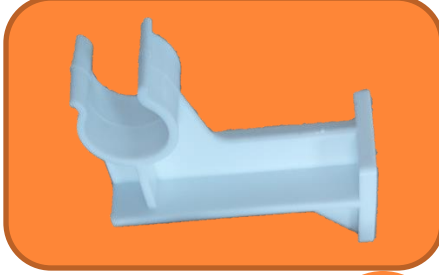
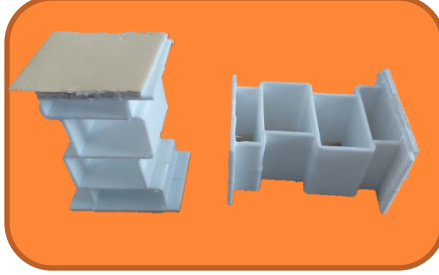
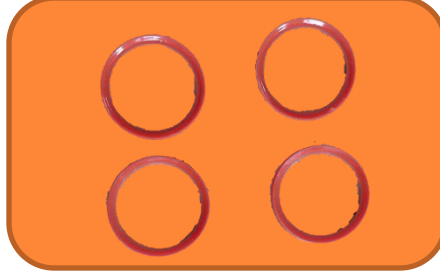
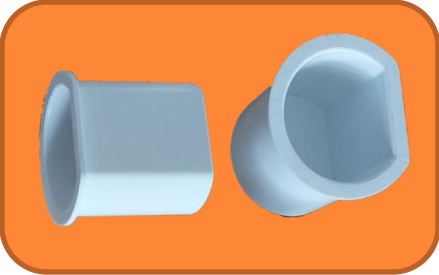
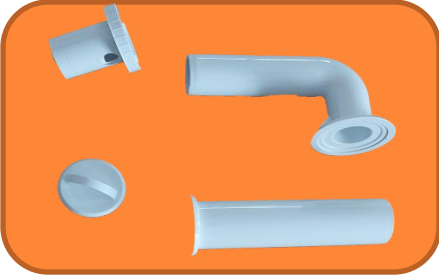


VISION:

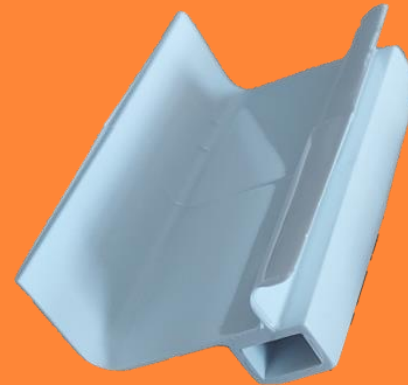
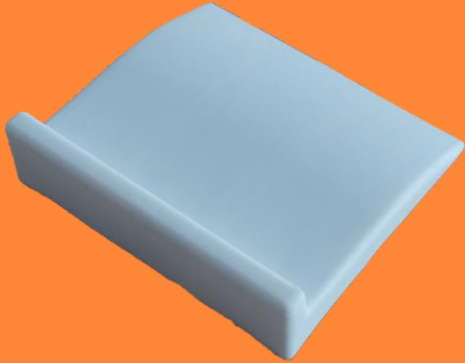
- Our company will be known for quality, values, standard and commitment in plastic moulding market.



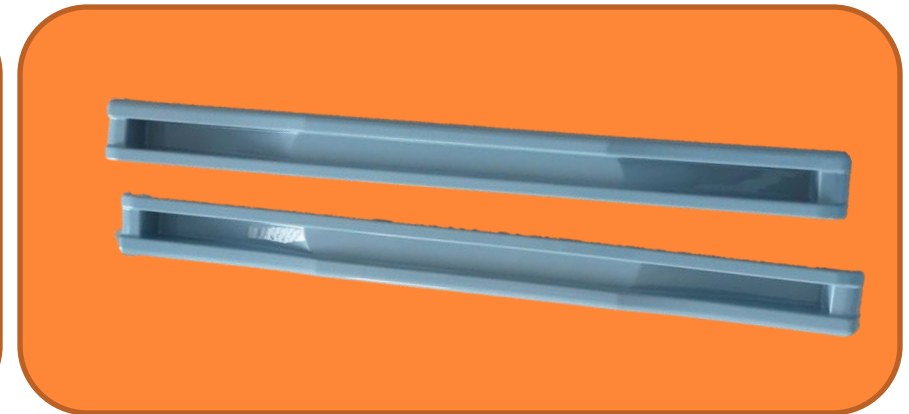
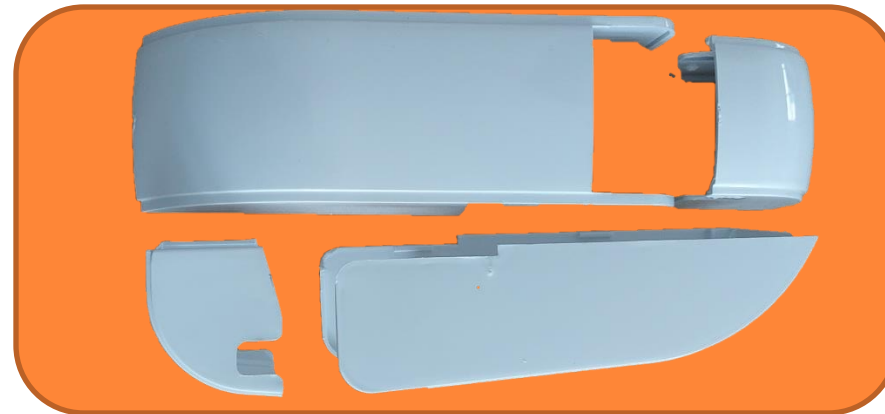
WE HAVE WORKED ON FOLLOWING PRODUCTS..



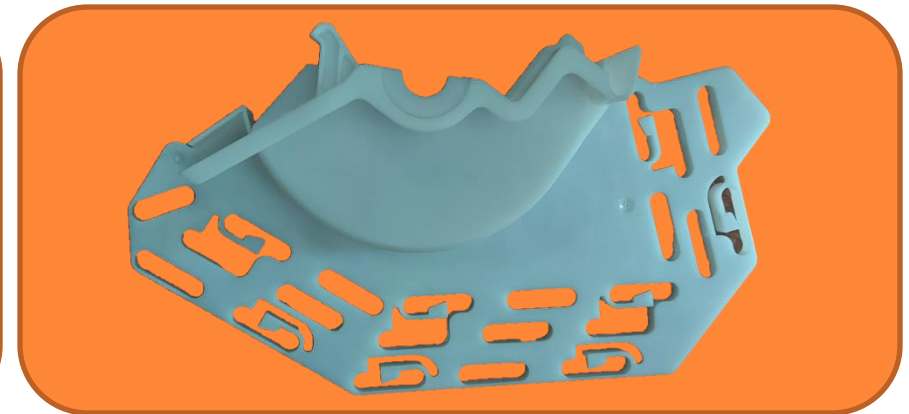
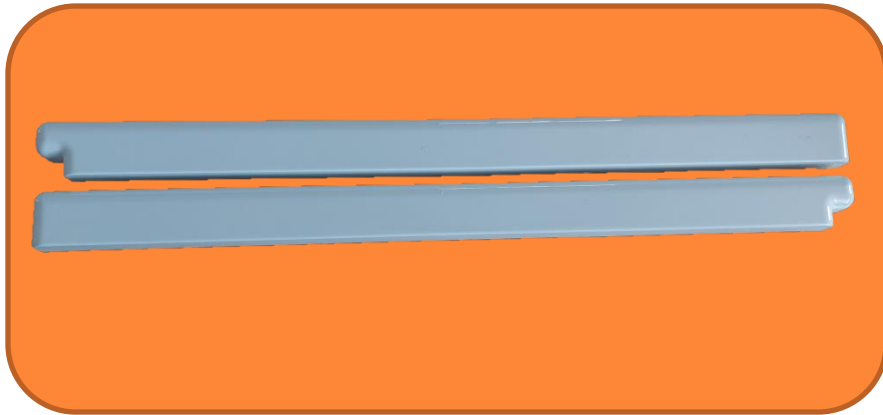
WE HAVE WORKED ON FOLLOWING PRODUCTS..



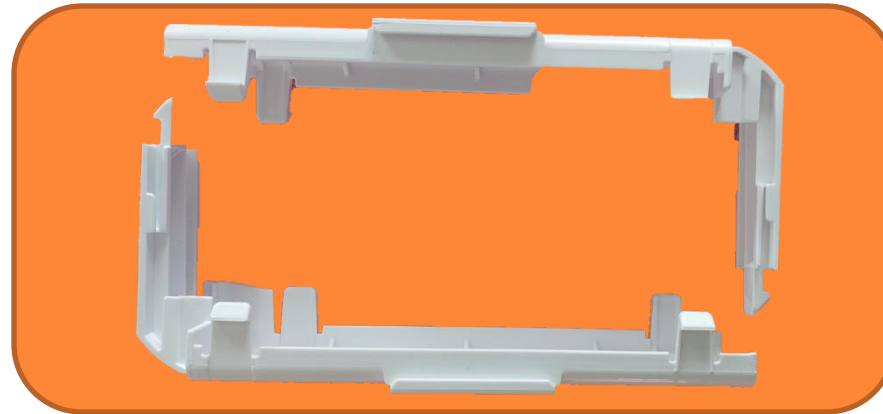
WE HAVE WORKED ON FOLLOWING PRODUCTS..



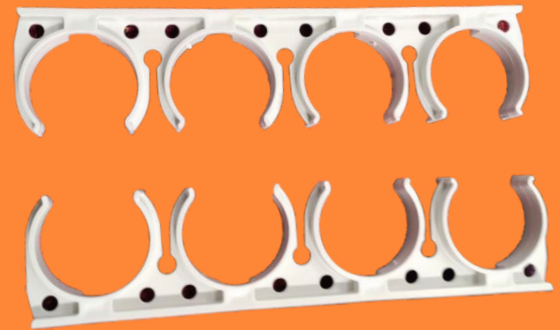
WE HAVE WORKED ON FOLLOWING PRODUCTS..



WE HAVE WORKED ON FOLLOWING PRODUCTS..



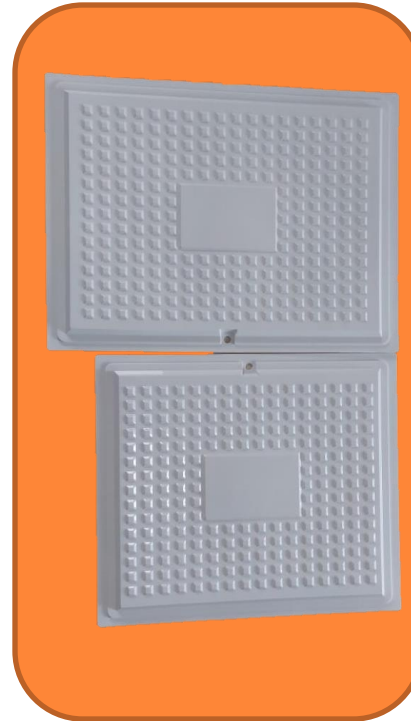
WE HAVE WORKED ON FOLLOWING PRODUCTS..



WE HAVE WORKED ON FOLLOWING PRODUCTS..



WE HAVE WORKED ON FOLLOWING PRODUCTS..



AND MANY MORE

*Thank
you*



Mfg. of All Kind of Plastic Parts & Job Works.

90-91, Kamala Amrut Industrial Park
At. Po, Indrad, Gujarat - 382715

M.: 9898998184 , 9033048008 , 9687899009

Visit: www.radhe-industries.com